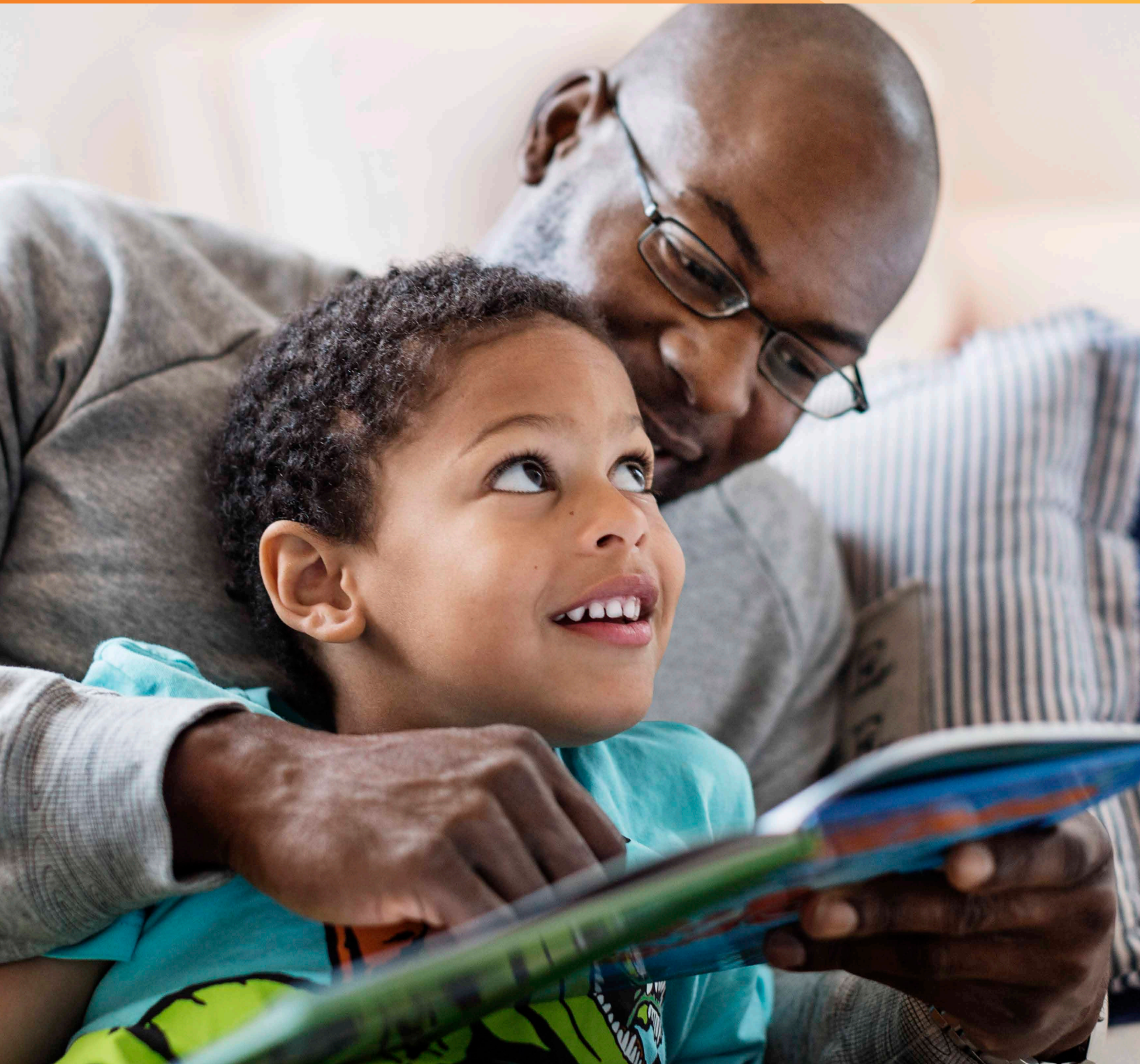


Rate Guide

2024 Individual and Family Plans



Sutter Health Plus Rate Guide

Thank you for considering Sutter Health Plus as your health plan partner. This guide can help you find Individual and Family Plan (IFP) monthly premiums and select the right plan to fit your budget.

IFP Rates

As an IFP member, you must pay a monthly premium to Sutter Health Plus for healthcare coverage. Your monthly premium is based on the plan you select, the age of each covered member as of the coverage effective date, the ZIP code where you live or reside, and if you are obtaining individual or family coverage. These plans follow a calendar year cycle—January 1 to December 31—and always renew on January 1 regardless of the original coverage effective date.

Use the following steps to calculate your monthly premium.

For Yourself

1. Find your county, ZIP code and rating region using the map on [page 5](#).
2. Use your age as of your coverage effective date.*
3. Select a plan.
4. Calculate monthly premium.

Example: A 36-year-old in Region 3 on the (2024) Silver MI03 HMO plan.

Plan Name	(2024) Platinum MI01 HMO	(2024) Gold MI02 HMO	(2024) Silver MI03 HMO	(2024) Bronze MI04 HMO
Plan Number	MI01	MI02	3 MI03	MI04
Age	Platinum	Gold	Silver	Bronze
0-14	\$521.12	\$435.57	\$339.42	\$299.87
15	\$567.44	\$474.28	\$369.59	\$326.52
16	\$585.15	\$489.09	\$381.13	\$336.71
17	\$602.86	\$503.89	\$392.66	\$346.90
18	\$621.93	\$519.83	\$405.09	\$357.88
19	\$641.01	\$535.78	\$417.51	\$368.86
20	\$660.76	\$552.29	\$430.38	\$380.22
21	\$681.21	\$569.38	\$443.70	\$391.99
22	\$681.21	\$569.38	\$443.70	\$391.99
23	\$681.21	\$569.38	\$443.70	\$391.99
24	\$681.21	\$569.38	\$443.70	\$391.99
25	\$683.92	\$571.65	\$445.46	\$393.55
26	\$697.55	\$583.03	\$454.34	\$401.39
27	\$713.89	\$596.70	\$464.99	\$410.80
28	\$740.46	\$618.90	\$482.29	\$426.08
29	\$762.26	\$637.12	\$496.49	\$438.63
30	\$773.16	\$646.23	\$503.59	\$444.90
31	\$789.51	\$659.90	\$514.23	\$454.31
32	\$805.86	\$673.56	\$524.88	\$463.72
33	\$816.07	\$682.10	\$531.54	\$469.59
34	\$826.97	\$691.21	\$538.64	\$475.87
35	\$832.42	\$695.77	\$542.19	\$479.00
2 36	\$837.87	\$700.32	4 \$545.74	\$482.14

* For example, if you enroll with Sutter Health Plus with a coverage effective date of March 1 for your first year, then we use your age as of March 1. When your coverage renews on January 1 of the following year, we base your renewal rate on your age as of January 1.

For a Family

1. Find your county, ZIP code and rating region using the map on [page 5](#).
2. Use each enrolling family member's age as of the coverage effective date:^{*}
 - You
 - Your spouse or domestic partner
 - Adult children ages 21 through 25
 - Your three oldest children under age 21
 - Your dependent parent/stepparent^{**}
3. Select a plan.
4. Calculate the monthly premium for each family member.
 - If you have more than three children under the age of 21, you will only pay premiums for the three oldest
 - If you have more than three children and the oldest turns 21 during the current plan year, the rates will be adjusted at the next renewal

Please see [page 4](#) for an example scenario.

If you have any questions or need assistance with this rate guide, please call Sutter Health Plus Member Services at 1-855-315-5800 Monday through Friday, 8 a.m. to 7 p.m.

^{*} For example, if you enroll with Sutter Health Plus with a coverage effective date of March 1 for your first year, then we use your age as of March 1. When your coverage renews on January 1 of the following year, we base your renewal rate on your age as of January 1.

^{**} A dependent may be:

- Your spouse
- Child of a subscriber or spouse
- Parent or stepparent of a subscriber who meets the definition of a qualifying relative under section 152(d) of Title 26 of the United States Code

Example: A family of seven in Region 3 on the (2024) Silver MI03 HMO plan.

Plan Name	(2024) Platinum MI01 HMO	(2024) Gold MI02 HMO	(2024) Silver MI03 HMO	(2024) Bronze MI04 HMO
Plan Number	MI01	MI02	3 MI03	MI04
Age	Platinum	Gold	Silver	Bronze
0-14 - child #1	\$521.12	\$435.57	\$339.42	\$299.87
2 15 - child #2	\$567.44	\$474.28	4 \$369.59	\$326.52
16	\$585.15	\$489.09	\$381.13	\$336.71
17	\$602.86	\$503.89	\$392.66	\$346.90
2 18 - child #3	\$621.93	\$519.83	4 \$405.09	\$357.88
19	\$641.01	\$535.78	\$417.51	\$368.86
2 20 - child #4	\$660.76	\$552.29	4 \$430.38	\$380.22
21	\$681.21	\$569.38	\$443.70	\$391.99
22	\$681.21	\$569.38	\$443.70	\$391.99
23	\$681.21	\$569.38	\$443.70	\$391.99
24	\$681.21	\$569.38	\$443.70	\$391.99
25	\$683.92	\$571.65	\$445.46	\$393.55
26	\$697.55	\$583.03	\$454.34	\$401.39
27	\$713.89	\$596.70	\$464.99	\$410.80
28	\$740.46	\$618.90	\$482.29	\$426.08
29	\$762.26	\$637.12	\$496.49	\$438.63
30	\$773.16	\$646.23	\$503.59	\$444.90
31	\$789.51	\$659.90	\$514.23	\$454.31
32	\$805.86	\$673.56	\$524.88	\$463.72
33	\$816.07	\$682.10	\$531.54	\$469.59
2 34 - your spouse	\$826.97	\$691.21	4 \$538.64	\$475.87
35	\$832.42	\$695.77	\$542.19	\$479.00
36	\$837.87	\$700.32	\$545.74	\$482.14
2 37 - you	\$843.32	\$704.88	4 \$549.29	\$485.27
38	\$848.77	\$709.43	\$552.84	\$488.41
39	\$859.67	\$718.54	\$559.93	\$494.68
40	\$870.57	\$727.65	\$567.03	\$500.95
41	\$886.92	\$741.32	\$577.68	\$510.36
42	\$902.59	\$754.41	\$587.89	\$519.38
43	\$924.38	\$772.63	\$602.09	\$531.92
44	\$951.63	\$795.41	\$619.83	\$547.60
45	\$983.65	\$822.17	\$640.69	\$566.02
46	\$1,021.80	\$854.05	\$665.53	\$587.97
47	\$1,064.71	\$889.92	\$693.48	\$612.67
48	\$1,113.76	\$930.92	\$725.43	\$640.89
49	\$1,162.12	\$971.34	\$756.93	\$668.72
50	\$1,216.62	\$1,016.89	\$792.43	\$700.08
51	\$1,270.43	\$1,061.87	\$827.48	\$731.05
52	\$1,329.70	\$1,111.41	\$866.08	\$765.15
53	\$1,389.64	\$1,161.51	\$905.12	\$799.64
54	\$1,454.36	\$1,215.60	\$947.27	\$836.88
55	\$1,519.07	\$1,269.69	\$989.42	\$874.12
56	\$1,589.23	\$1,328.34	\$1,035.12	\$914.49
57	\$1,660.08	\$1,387.55	\$1,081.27	\$955.26
58	\$1,735.69	\$1,450.75	\$1,130.52	\$998.77
59	\$1,773.16	\$1,482.06	\$1,154.92	\$1,020.33
2 60 - your dependent parent/stepparent	\$1,848.77	\$1,545.26	4 \$1,204.17	\$1,063.84

Totals	
Child #1	-
Child #2	\$369.59
Child #3	\$405.09
Child #4	\$430.38
Your dependent parent/stepparent	\$1,204.17
Your spouse	\$538.64
You	\$549.29
Total Monthly Premium:	\$3,497.16

Licensed Service Area



Alameda County	Region 6 - Page 10	All ZIP codes
Contra Costa County	Region 5 - Page 9	All ZIP codes
El Dorado County (partial)	Region 3 - Page 7	95614 95635 95651 95664 95672 95682 95762
Nevada County (partial)	Region 1 - Page 5	95602 95949
Placer County (partial)	Region 3 - Page 7	95602 95603 95604 95626 95631 95648 95650 95658 95661 95663 95668 95677 95678 95681 95703 95713 95722 95736 95746 95747 95765
Sacramento County	Region 3 - Page 7	All ZIP codes
San Francisco County	Region 4 - Page 8	All ZIP codes
San Joaquin County	Region 10 - Page 14	All ZIP codes
San Mateo County	Region 8 - Page 12	All ZIP codes
Santa Clara County (partial)	Region 7 - Page 11	94022 94024 94040 94041 94043 94085 94086 94087 94089 94301 94303 94304 94305 94306 95002 95008 95013 95014 95030 95032 95033 95035 95050 95051 95053 95054 95070 95076 95110 95111 95112 95113 95116 95117 95118 95119 95120 95121 95122 95123 95124 95125 95126 95127 95128 95129 95130 95131 95132 95133 95134 95135 95136 95138 95139 95140 95148 95192
Santa Cruz County	Region 9 - Page 13	All ZIP codes
Stanislaus County	Region 10 - Page 14	All ZIP codes
Solano County	Region 2 - Page 6	All ZIP codes
Sonoma County (partial)	Region 2 - Page 6	94926 94927 94928 94931 94951 94952 94953 94954 94955 94972 94975 94999 95401 95402 95403 95404 95405 95406 95407 95409 95419 95421 95425 95430 95436 95439 95441 95442 95444 95446 95448 95450 95452 95462 95465 95471 95472 95473 95486 95492
Sutter County (partial)	Region 1 - Page 5	95645 95668 95659
Yolo County	Region 3 - Page 7	All ZIP codes

Some ZIP codes span more than one county. In that case, both the ZIP code and the county must be within the licensed service area for a member to enroll.

Nevada and Sutter Counties (partial)

Plan Name	(2024) Platinum MI01 HMO	(2024) Gold MI02 HMO	(2024) Silver MI03 HMO	(2024) Bronze MI04 HMO
Plan Number	MI01	MI02	MI03	MI04
Age	Platinum	Gold	Silver	Bronze
0-14	\$562.32	\$470.01	\$366.26	\$323.58
15	\$612.30	\$511.78	\$398.82	\$352.34
16	\$631.42	\$527.76	\$411.26	\$363.34
17	\$650.53	\$543.73	\$423.71	\$374.33
18	\$671.11	\$560.94	\$437.12	\$386.18
19	\$691.69	\$578.14	\$450.52	\$398.02
20	\$713.01	\$595.96	\$464.41	\$410.29
21	\$735.07	\$614.40	\$478.78	\$422.99
22	\$735.07	\$614.40	\$478.78	\$422.99
23	\$735.07	\$614.40	\$478.78	\$422.99
24	\$735.07	\$614.40	\$478.78	\$422.99
25	\$738.00	\$616.85	\$480.69	\$424.67
26	\$752.70	\$629.13	\$490.26	\$433.13
27	\$770.34	\$643.88	\$501.75	\$443.28
28	\$799.01	\$667.84	\$520.42	\$459.78
29	\$822.53	\$687.50	\$535.74	\$473.31
30	\$834.29	\$697.33	\$543.40	\$480.08
31	\$851.93	\$712.08	\$554.90	\$490.23
32	\$869.58	\$726.82	\$566.39	\$500.38
33	\$880.60	\$736.04	\$573.57	\$506.73
34	\$892.36	\$745.87	\$581.23	\$513.49
35	\$898.24	\$750.78	\$585.06	\$516.88
36	\$904.12	\$755.70	\$588.89	\$520.26
37	\$910.00	\$760.61	\$592.72	\$523.64
38	\$915.88	\$765.53	\$596.55	\$527.03
39	\$927.64	\$775.36	\$604.21	\$533.80
40	\$939.41	\$785.19	\$611.87	\$540.56
41	\$957.05	\$799.93	\$623.36	\$550.72
42	\$973.95	\$814.06	\$634.37	\$560.44
43	\$997.48	\$833.72	\$649.69	\$573.98
44	\$1,026.88	\$858.30	\$668.84	\$590.90
45	\$1,061.43	\$887.18	\$691.34	\$610.78
46	\$1,102.59	\$921.58	\$718.16	\$634.46
47	\$1,148.90	\$960.29	\$748.32	\$661.11
48	\$1,201.82	\$1,004.52	\$782.79	\$691.57
49	\$1,254.01	\$1,048.15	\$816.78	\$721.60
50	\$1,312.82	\$1,097.30	\$855.08	\$755.44
51	\$1,370.89	\$1,145.83	\$892.91	\$788.85
52	\$1,434.84	\$1,199.28	\$934.56	\$825.65
53	\$1,499.52	\$1,253.35	\$976.69	\$862.87
54	\$1,569.35	\$1,311.72	\$1,022.18	\$903.05
55	\$1,639.18	\$1,370.08	\$1,067.66	\$943.24
56	\$1,714.89	\$1,433.37	\$1,116.97	\$986.80
57	\$1,791.34	\$1,497.26	\$1,166.76	\$1,030.79
58	\$1,872.93	\$1,565.46	\$1,219.91	\$1,077.74
59	\$1,913.36	\$1,599.25	\$1,246.24	\$1,101.01
60	\$1,994.95	\$1,667.45	\$1,299.38	\$1,147.96
61	\$2,065.52	\$1,726.43	\$1,345.35	\$1,188.56
62	\$2,111.83	\$1,765.14	\$1,375.51	\$1,215.21
63	\$2,169.89	\$1,813.67	\$1,413.33	\$1,248.63
64+	\$2,205.17	\$1,843.15	\$1,436.30	\$1,268.92

Solano and Sonoma (partial) Counties

Plan Name	(2024) Platinum MI01 HMO	(2024) Gold MI02 HMO	(2024) Silver MI03 HMO	(2024) Bronze MI04 HMO
Plan Number	MI01	MI02	MI03	MI04
Age	Platinum	Gold	Silver	Bronze
0-14	\$550.61	\$460.22	\$358.63	\$316.84
15	\$599.55	\$501.13	\$390.51	\$345.00
16	\$618.27	\$516.77	\$402.70	\$355.77
17	\$636.98	\$532.41	\$414.89	\$366.54
18	\$657.13	\$549.25	\$428.01	\$378.14
19	\$677.29	\$566.10	\$441.14	\$389.73
20	\$698.16	\$583.55	\$454.74	\$401.74
21	\$719.76	\$601.60	\$468.81	\$414.18
22	\$719.76	\$601.60	\$468.81	\$414.18
23	\$719.76	\$601.60	\$468.81	\$414.18
24	\$719.76	\$601.60	\$468.81	\$414.18
25	\$722.63	\$604.00	\$470.68	\$415.82
26	\$737.03	\$616.03	\$480.05	\$424.11
27	\$754.30	\$630.47	\$491.30	\$434.05
28	\$782.37	\$653.93	\$509.59	\$450.20
29	\$805.40	\$673.18	\$524.59	\$463.45
30	\$816.92	\$682.81	\$532.09	\$470.08
31	\$834.19	\$697.25	\$543.34	\$480.02
32	\$851.47	\$711.68	\$554.59	\$489.96
33	\$862.26	\$720.71	\$561.62	\$496.17
34	\$873.78	\$730.33	\$569.12	\$502.80
35	\$879.54	\$735.15	\$572.87	\$506.11
36	\$885.29	\$739.96	\$576.62	\$509.43
37	\$891.05	\$744.77	\$580.37	\$512.74
38	\$896.81	\$749.58	\$584.13	\$516.05
39	\$908.33	\$759.21	\$591.63	\$522.68
40	\$919.84	\$768.84	\$599.13	\$529.31
41	\$937.12	\$783.27	\$610.38	\$539.25
42	\$953.67	\$797.11	\$621.16	\$548.77
43	\$976.70	\$816.36	\$636.16	\$562.03
44	\$1,005.49	\$840.43	\$654.91	\$578.59
45	\$1,039.32	\$868.70	\$676.95	\$598.06
46	\$1,079.63	\$902.39	\$703.20	\$621.25
47	\$1,124.97	\$940.29	\$732.73	\$647.34
48	\$1,176.79	\$983.60	\$766.49	\$677.16
49	\$1,227.90	\$1,026.32	\$799.77	\$706.57
50	\$1,285.48	\$1,074.45	\$837.28	\$739.70
51	\$1,342.34	\$1,121.97	\$874.31	\$772.42
52	\$1,404.96	\$1,174.31	\$915.10	\$808.46
53	\$1,468.29	\$1,227.25	\$956.35	\$844.90
54	\$1,536.67	\$1,284.40	\$1,000.89	\$884.25
55	\$1,605.05	\$1,341.55	\$1,045.42	\$923.59
56	\$1,679.18	\$1,403.52	\$1,093.71	\$966.25
57	\$1,754.04	\$1,466.08	\$1,142.47	\$1,009.33
58	\$1,833.93	\$1,532.86	\$1,194.50	\$1,055.30
59	\$1,873.51	\$1,565.95	\$1,220.29	\$1,078.08
60	\$1,953.41	\$1,632.72	\$1,272.32	\$1,124.05
61	\$2,022.50	\$1,690.48	\$1,317.33	\$1,163.81
62	\$2,067.85	\$1,728.38	\$1,346.86	\$1,189.90
63	\$2,124.71	\$1,775.90	\$1,383.90	\$1,222.62
64+	\$2,159.25	\$1,804.77	\$1,406.39	\$1,242.49

El Dorado (partial), Placer (partial), Sacramento and Yolo Counties

Plan Name	(2024) Platinum MI01 HMO	(2024) Gold MI02 HMO	(2024) Silver MI03 HMO	(2024) Bronze MI04 HMO
Plan Number	MI01	MI02	MI03	MI04
Age	Platinum	Gold	Silver	Bronze
0-14	\$521.12	\$435.57	\$339.42	\$299.87
15	\$567.44	\$474.28	\$369.59	\$326.52
16	\$585.15	\$489.09	\$381.13	\$336.71
17	\$602.86	\$503.89	\$392.66	\$346.90
18	\$621.93	\$519.83	\$405.09	\$357.88
19	\$641.01	\$535.78	\$417.51	\$368.86
20	\$660.76	\$552.29	\$430.38	\$380.22
21	\$681.21	\$569.38	\$443.70	\$391.99
22	\$681.21	\$569.38	\$443.70	\$391.99
23	\$681.21	\$569.38	\$443.70	\$391.99
24	\$681.21	\$569.38	\$443.70	\$391.99
25	\$683.92	\$571.65	\$445.46	\$393.55
26	\$697.55	\$583.03	\$454.34	\$401.39
27	\$713.89	\$596.70	\$464.99	\$410.80
28	\$740.46	\$618.90	\$482.29	\$426.08
29	\$762.26	\$637.12	\$496.49	\$438.63
30	\$773.16	\$646.23	\$503.59	\$444.90
31	\$789.51	\$659.90	\$514.23	\$454.31
32	\$805.86	\$673.56	\$524.88	\$463.72
33	\$816.07	\$682.10	\$531.54	\$469.59
34	\$826.97	\$691.21	\$538.64	\$475.87
35	\$832.42	\$695.77	\$542.19	\$479.00
36	\$837.87	\$700.32	\$545.74	\$482.14
37	\$843.32	\$704.88	\$549.29	\$485.27
38	\$848.77	\$709.43	\$552.84	\$488.41
39	\$859.67	\$718.54	\$559.93	\$494.68
40	\$870.57	\$727.65	\$567.03	\$500.95
41	\$886.92	\$741.32	\$577.68	\$510.36
42	\$902.59	\$754.41	\$587.89	\$519.38
43	\$924.38	\$772.63	\$602.09	\$531.92
44	\$951.63	\$795.41	\$619.83	\$547.60
45	\$983.65	\$822.17	\$640.69	\$566.02
46	\$1,021.80	\$854.05	\$665.53	\$587.97
47	\$1,064.71	\$889.92	\$693.48	\$612.67
48	\$1,113.76	\$930.92	\$725.43	\$640.89
49	\$1,162.12	\$971.34	\$756.93	\$668.72
50	\$1,216.62	\$1,016.89	\$792.43	\$700.08
51	\$1,270.43	\$1,061.87	\$827.48	\$731.05
52	\$1,329.70	\$1,111.41	\$866.08	\$765.15
53	\$1,389.64	\$1,161.51	\$905.12	\$799.64
54	\$1,454.36	\$1,215.60	\$947.27	\$836.88
55	\$1,519.07	\$1,269.69	\$989.42	\$874.12
56	\$1,589.23	\$1,328.34	\$1,035.12	\$914.49
57	\$1,660.08	\$1,387.55	\$1,081.27	\$955.26
58	\$1,735.69	\$1,450.75	\$1,130.52	\$998.77
59	\$1,773.16	\$1,482.06	\$1,154.92	\$1,020.33
60	\$1,848.77	\$1,545.26	\$1,204.17	\$1,063.84
61	\$1,914.16	\$1,599.92	\$1,246.76	\$1,101.47
62	\$1,957.08	\$1,635.79	\$1,274.72	\$1,126.17
63	\$2,010.89	\$1,680.77	\$1,309.77	\$1,157.13
64+	\$2,043.58	\$1,708.09	\$1,331.05	\$1,175.94

San Francisco County

Plan Name	(2024) Platinum MI01 HMO	(2024) Gold MI02 HMO	(2024) Silver MI03 HMO	(2024) Bronze MI04 HMO
Plan Number	MI01	MI02	MI03	MI04
Age	Platinum	Gold	Silver	Bronze
0-14	\$628.16	\$525.04	\$409.14	\$361.46
15	\$684.00	\$571.71	\$445.51	\$393.59
16	\$705.35	\$589.55	\$459.42	\$405.88
17	\$726.70	\$607.40	\$473.32	\$418.16
18	\$749.69	\$626.61	\$488.30	\$431.39
19	\$772.68	\$645.83	\$503.27	\$444.62
20	\$796.49	\$665.74	\$518.78	\$458.33
21	\$821.14	\$686.33	\$534.84	\$472.51
22	\$821.14	\$686.33	\$534.84	\$472.51
23	\$821.14	\$686.33	\$534.84	\$472.51
24	\$821.14	\$686.33	\$534.84	\$472.51
25	\$824.41	\$689.07	\$536.97	\$474.39
26	\$840.83	\$702.80	\$547.66	\$483.84
27	\$860.54	\$719.27	\$560.50	\$495.18
28	\$892.56	\$746.04	\$581.36	\$513.61
29	\$918.84	\$768.00	\$598.47	\$528.73
30	\$931.98	\$778.98	\$607.03	\$536.29
31	\$951.68	\$795.45	\$619.87	\$547.63
32	\$971.39	\$811.92	\$632.70	\$558.97
33	\$983.71	\$822.22	\$640.72	\$566.06
34	\$996.85	\$833.20	\$649.28	\$573.62
35	\$1,003.42	\$838.69	\$653.56	\$577.40
36	\$1,009.98	\$844.18	\$657.84	\$581.18
37	\$1,016.55	\$849.67	\$662.12	\$584.96
38	\$1,023.12	\$855.16	\$666.40	\$588.74
39	\$1,036.26	\$866.14	\$674.95	\$596.30
40	\$1,049.40	\$877.12	\$683.51	\$603.86
41	\$1,069.11	\$893.60	\$696.35	\$615.20
42	\$1,087.99	\$909.38	\$708.65	\$626.06
43	\$1,114.27	\$931.34	\$725.76	\$641.18
44	\$1,147.11	\$958.80	\$747.16	\$660.09
45	\$1,185.71	\$991.05	\$772.29	\$682.29
46	\$1,231.69	\$1,029.49	\$802.24	\$708.75
47	\$1,283.42	\$1,072.73	\$835.94	\$738.52
48	\$1,342.54	\$1,122.14	\$874.45	\$772.54
49	\$1,400.84	\$1,170.87	\$912.42	\$806.09
50	\$1,466.53	\$1,225.78	\$955.20	\$843.89
51	\$1,531.40	\$1,280.00	\$997.46	\$881.22
52	\$1,602.84	\$1,339.71	\$1,043.99	\$922.32
53	\$1,675.10	\$1,400.10	\$1,091.05	\$963.90
54	\$1,753.10	\$1,465.30	\$1,141.86	\$1,008.79
55	\$1,831.11	\$1,530.50	\$1,192.67	\$1,053.68
56	\$1,915.69	\$1,601.20	\$1,247.76	\$1,102.35
57	\$2,001.08	\$1,672.57	\$1,303.38	\$1,151.49
58	\$2,092.23	\$1,748.76	\$1,362.74	\$1,203.93
59	\$2,137.39	\$1,786.50	\$1,392.16	\$1,229.92
60	\$2,228.54	\$1,862.69	\$1,451.53	\$1,282.37
61	\$2,307.36	\$1,928.57	\$1,502.87	\$1,327.73
62	\$2,359.09	\$1,971.81	\$1,536.56	\$1,357.50
63	\$2,423.96	\$2,026.03	\$1,578.81	\$1,394.83
64+	\$2,463.37	\$2,058.96	\$1,604.48	\$1,417.50

Contra Costa County

Plan Name	(2024) Platinum MI01 HMO	(2024) Gold MI02 HMO	(2024) Silver MI03 HMO	(2024) Bronze MI04 HMO
Plan Number	MI01	MI02	MI03	MI04
Age	Platinum	Gold	Silver	Bronze
0-14	\$639.90	\$534.85	\$416.79	\$368.22
15	\$696.78	\$582.39	\$453.84	\$400.95
16	\$718.53	\$600.57	\$468.00	\$413.46
17	\$740.27	\$618.75	\$482.17	\$425.98
18	\$763.70	\$638.32	\$497.42	\$439.45
19	\$787.12	\$657.90	\$512.68	\$452.93
20	\$811.37	\$678.17	\$528.48	\$466.89
21	\$836.48	\$699.16	\$544.83	\$481.34
22	\$836.48	\$699.16	\$544.83	\$481.34
23	\$836.48	\$699.16	\$544.83	\$481.34
24	\$836.48	\$699.16	\$544.83	\$481.34
25	\$839.81	\$701.94	\$547.00	\$483.26
26	\$856.54	\$715.93	\$557.90	\$492.88
27	\$876.62	\$732.71	\$570.97	\$504.43
28	\$909.24	\$759.97	\$592.22	\$523.21
29	\$936.01	\$782.35	\$609.66	\$538.61
30	\$949.39	\$793.53	\$618.37	\$546.31
31	\$969.47	\$810.31	\$631.45	\$557.86
32	\$989.54	\$827.09	\$644.52	\$569.41
33	\$1,002.09	\$837.58	\$652.70	\$576.63
34	\$1,015.47	\$848.77	\$661.41	\$584.33
35	\$1,022.16	\$854.36	\$665.77	\$588.19
36	\$1,028.86	\$859.95	\$670.13	\$592.04
37	\$1,035.55	\$865.55	\$674.49	\$595.89
38	\$1,042.24	\$871.14	\$678.85	\$599.74
39	\$1,055.62	\$882.33	\$687.56	\$607.44
40	\$1,069.01	\$893.51	\$696.28	\$615.14
41	\$1,089.08	\$910.29	\$709.36	\$626.69
42	\$1,108.32	\$926.37	\$721.89	\$637.76
43	\$1,135.09	\$948.74	\$739.32	\$653.16
44	\$1,168.55	\$976.71	\$761.12	\$672.42
45	\$1,207.86	\$1,009.57	\$786.72	\$695.04
46	\$1,254.70	\$1,048.72	\$817.23	\$722.00
47	\$1,307.40	\$1,092.77	\$851.56	\$752.32
48	\$1,367.62	\$1,143.11	\$890.78	\$786.97
49	\$1,427.01	\$1,192.75	\$929.47	\$821.15
50	\$1,493.93	\$1,248.68	\$973.05	\$859.66
51	\$1,560.01	\$1,303.91	\$1,016.09	\$897.68
52	\$1,632.79	\$1,364.74	\$1,063.49	\$939.56
53	\$1,706.39	\$1,426.26	\$1,111.44	\$981.91
54	\$1,785.86	\$1,492.68	\$1,163.19	\$1,027.64
55	\$1,865.32	\$1,559.10	\$1,214.95	\$1,073.37
56	\$1,951.48	\$1,631.11	\$1,271.07	\$1,122.94
57	\$2,038.47	\$1,703.82	\$1,327.73	\$1,173.00
58	\$2,131.32	\$1,781.43	\$1,388.21	\$1,226.43
59	\$2,177.33	\$1,819.88	\$1,418.17	\$1,252.90
60	\$2,270.17	\$1,897.49	\$1,478.65	\$1,306.33
61	\$2,350.47	\$1,964.61	\$1,530.95	\$1,352.54
62	\$2,403.17	\$2,008.65	\$1,565.27	\$1,382.86
63	\$2,469.25	\$2,063.89	\$1,608.31	\$1,420.89
64+	\$2,509.39	\$2,097.43	\$1,634.45	\$1,443.98

Alameda County

Plan Name	(2024) Platinum MI01 HMO	(2024) Gold MI02 HMO	(2024) Silver MI03 HMO	(2024) Bronze MI04 HMO
Plan Number	MI01	MI02	MI03	MI04
Age	Platinum	Gold	Silver	Bronze
0-14	\$579.69	\$484.53	\$377.57	\$333.57
15	\$631.22	\$527.60	\$411.14	\$363.22
16	\$650.92	\$544.06	\$423.97	\$374.56
17	\$670.62	\$560.53	\$436.80	\$385.90
18	\$691.84	\$578.26	\$450.62	\$398.11
19	\$713.06	\$596.00	\$464.44	\$410.32
20	\$735.03	\$614.37	\$478.75	\$422.96
21	\$757.78	\$633.38	\$493.57	\$436.05
22	\$757.78	\$633.38	\$493.57	\$436.05
23	\$757.78	\$633.38	\$493.57	\$436.05
24	\$757.78	\$633.38	\$493.57	\$436.05
25	\$760.80	\$635.90	\$495.54	\$437.79
26	\$775.95	\$648.57	\$505.41	\$446.51
27	\$794.14	\$663.77	\$517.25	\$456.97
28	\$823.69	\$688.47	\$536.50	\$473.98
29	\$847.94	\$708.74	\$552.30	\$487.93
30	\$860.07	\$718.87	\$560.19	\$494.91
31	\$878.25	\$734.07	\$572.04	\$505.37
32	\$896.44	\$749.27	\$583.88	\$515.84
33	\$907.81	\$758.77	\$591.29	\$522.38
34	\$919.93	\$768.91	\$599.18	\$529.36
35	\$925.99	\$773.98	\$603.13	\$532.84
36	\$932.05	\$779.04	\$607.08	\$536.33
37	\$938.12	\$784.11	\$611.03	\$539.82
38	\$944.18	\$789.18	\$614.98	\$543.31
39	\$956.30	\$799.31	\$622.87	\$550.29
40	\$968.43	\$809.44	\$630.77	\$557.26
41	\$986.61	\$824.64	\$642.62	\$567.73
42	\$1,004.04	\$839.21	\$653.97	\$577.76
43	\$1,028.29	\$859.48	\$669.76	\$591.71
44	\$1,058.60	\$884.81	\$689.51	\$609.15
45	\$1,094.22	\$914.58	\$712.70	\$629.65
46	\$1,136.65	\$950.05	\$740.34	\$654.07
47	\$1,184.39	\$989.95	\$771.44	\$681.54
48	\$1,238.95	\$1,035.56	\$806.97	\$712.93
49	\$1,292.75	\$1,080.53	\$842.02	\$743.89
50	\$1,353.37	\$1,131.19	\$881.50	\$778.77
51	\$1,413.24	\$1,181.23	\$920.49	\$813.22
52	\$1,479.16	\$1,236.33	\$963.43	\$851.16
53	\$1,545.85	\$1,292.07	\$1,006.86	\$889.53
54	\$1,617.83	\$1,352.24	\$1,053.75	\$930.95
55	\$1,689.82	\$1,412.41	\$1,100.64	\$972.38
56	\$1,767.87	\$1,477.65	\$1,151.48	\$1,017.29
57	\$1,846.68	\$1,543.52	\$1,202.81	\$1,062.64
58	\$1,930.79	\$1,613.82	\$1,257.59	\$1,111.04
59	\$1,972.47	\$1,648.66	\$1,284.74	\$1,135.02
60	\$2,056.58	\$1,718.96	\$1,339.53	\$1,183.42
61	\$2,129.33	\$1,779.76	\$1,386.91	\$1,225.28
62	\$2,177.07	\$1,819.67	\$1,418.00	\$1,252.75
63	\$2,236.93	\$1,869.70	\$1,456.99	\$1,287.20
64+	\$2,273.29	\$1,900.09	\$1,480.67	\$1,308.12

Santa Clara County (partial)

Plan Name	(2024) Platinum MI01 HMO	(2024) Gold MI02 HMO	(2024) Silver MI03 HMO	(2024) Bronze MI04 HMO
Plan Number	MI01	MI02	MI03	MI04
Age	Platinum	Gold	Silver	Bronze
0-14	\$668.69	\$558.92	\$435.54	\$384.79
15	\$728.13	\$608.60	\$474.26	\$418.99
16	\$750.86	\$627.59	\$489.06	\$432.07
17	\$773.59	\$646.59	\$503.86	\$445.15
18	\$798.06	\$667.05	\$519.81	\$459.23
19	\$822.54	\$687.50	\$535.75	\$473.31
20	\$847.89	\$708.69	\$552.26	\$487.90
21	\$874.12	\$730.62	\$569.35	\$503.00
22	\$874.12	\$730.62	\$569.35	\$503.00
23	\$874.12	\$730.62	\$569.35	\$503.00
24	\$874.12	\$730.62	\$569.35	\$503.00
25	\$877.61	\$733.53	\$571.62	\$505.00
26	\$895.09	\$748.14	\$583.00	\$515.06
27	\$916.07	\$765.68	\$596.67	\$527.13
28	\$950.16	\$794.17	\$618.87	\$546.75
29	\$978.13	\$817.55	\$637.09	\$562.85
30	\$992.11	\$829.24	\$646.20	\$570.89
31	\$1,013.09	\$846.78	\$659.86	\$582.97
32	\$1,034.07	\$864.31	\$673.53	\$595.04
33	\$1,047.18	\$875.27	\$682.07	\$602.58
34	\$1,061.17	\$886.96	\$691.18	\$610.63
35	\$1,068.16	\$892.81	\$695.73	\$614.65
36	\$1,075.15	\$898.65	\$700.29	\$618.68
37	\$1,082.15	\$904.50	\$704.84	\$622.70
38	\$1,089.14	\$910.34	\$709.40	\$626.73
39	\$1,103.13	\$922.03	\$718.51	\$634.77
40	\$1,117.11	\$933.72	\$727.61	\$642.82
41	\$1,138.09	\$951.25	\$741.28	\$654.89
42	\$1,158.19	\$968.06	\$754.37	\$666.46
43	\$1,186.17	\$991.44	\$772.59	\$682.56
44	\$1,221.13	\$1,020.66	\$795.37	\$702.68
45	\$1,262.21	\$1,055.00	\$822.12	\$726.32
46	\$1,311.16	\$1,095.91	\$854.01	\$754.48
47	\$1,366.23	\$1,141.94	\$889.88	\$786.17
48	\$1,429.17	\$1,194.55	\$930.87	\$822.39
49	\$1,491.23	\$1,246.42	\$971.29	\$858.10
50	\$1,561.16	\$1,304.87	\$1,016.84	\$898.34
51	\$1,630.21	\$1,362.59	\$1,061.82	\$938.08
52	\$1,706.26	\$1,426.15	\$1,111.35	\$981.84
53	\$1,783.18	\$1,490.44	\$1,161.45	\$1,026.10
54	\$1,866.22	\$1,559.85	\$1,215.54	\$1,073.88
55	\$1,949.26	\$1,629.26	\$1,269.63	\$1,121.67
56	\$2,039.30	\$1,704.51	\$1,328.27	\$1,173.48
57	\$2,130.20	\$1,780.50	\$1,387.48	\$1,225.79
58	\$2,227.23	\$1,861.59	\$1,450.67	\$1,281.62
59	\$2,275.31	\$1,901.78	\$1,481.99	\$1,309.28
60	\$2,372.33	\$1,982.88	\$1,545.18	\$1,365.11
61	\$2,456.25	\$2,053.01	\$1,599.84	\$1,413.40
62	\$2,511.31	\$2,099.04	\$1,635.71	\$1,445.09
63	\$2,580.37	\$2,156.76	\$1,680.69	\$1,484.83
64+	\$2,622.32	\$2,191.82	\$1,708.01	\$1,508.96

San Mateo County

Plan Name	(2024) Platinum MI01 HMO	(2024) Gold MI02 HMO	(2024) Silver MI03 HMO	(2024) Bronze MI04 HMO
Plan Number	MI01	MI02	MI03	MI04
Age	Platinum	Gold	Silver	Bronze
0-14	\$559.65	\$467.77	\$364.52	\$322.04
15	\$609.40	\$509.35	\$396.92	\$350.67
16	\$628.42	\$525.25	\$409.31	\$361.61
17	\$647.44	\$541.15	\$421.70	\$372.56
18	\$667.92	\$558.27	\$435.04	\$384.34
19	\$688.41	\$575.39	\$448.38	\$396.13
20	\$709.62	\$593.13	\$462.20	\$408.34
21	\$731.58	\$611.48	\$476.51	\$420.98
22	\$731.58	\$611.48	\$476.51	\$420.98
23	\$731.58	\$611.48	\$476.51	\$420.98
24	\$731.58	\$611.48	\$476.51	\$420.98
25	\$734.49	\$613.92	\$478.40	\$422.65
26	\$749.13	\$626.14	\$487.93	\$431.07
27	\$766.68	\$640.82	\$499.37	\$441.17
28	\$795.21	\$664.67	\$517.95	\$457.59
29	\$818.62	\$684.23	\$533.20	\$471.06
30	\$830.33	\$694.02	\$540.82	\$477.80
31	\$847.89	\$708.69	\$552.26	\$487.90
32	\$865.44	\$723.37	\$563.70	\$498.00
33	\$876.42	\$732.54	\$570.84	\$504.32
34	\$888.12	\$742.32	\$578.47	\$511.05
35	\$893.98	\$747.22	\$582.28	\$514.42
36	\$899.83	\$752.11	\$586.09	\$517.79
37	\$905.68	\$757.00	\$589.90	\$521.16
38	\$911.53	\$761.89	\$593.71	\$524.53
39	\$923.24	\$771.67	\$601.34	\$531.26
40	\$934.94	\$781.46	\$608.96	\$538.00
41	\$952.50	\$796.13	\$620.40	\$548.10
42	\$969.33	\$810.20	\$631.36	\$557.78
43	\$992.74	\$829.76	\$646.61	\$571.25
44	\$1,022.00	\$854.22	\$665.67	\$588.09
45	\$1,056.38	\$882.96	\$688.06	\$607.88
46	\$1,097.35	\$917.20	\$714.74	\$631.45
47	\$1,143.44	\$955.73	\$744.76	\$657.97
48	\$1,196.11	\$999.75	\$779.07	\$688.28
49	\$1,248.05	\$1,043.17	\$812.90	\$718.17
50	\$1,306.58	\$1,092.08	\$851.02	\$751.85
51	\$1,364.37	\$1,140.39	\$888.67	\$785.10
52	\$1,428.02	\$1,193.59	\$930.12	\$821.73
53	\$1,492.40	\$1,247.40	\$972.05	\$858.77
54	\$1,561.90	\$1,305.49	\$1,017.32	\$898.77
55	\$1,631.40	\$1,363.58	\$1,062.59	\$938.76
56	\$1,706.75	\$1,426.56	\$1,111.67	\$982.12
57	\$1,782.83	\$1,490.15	\$1,161.22	\$1,025.90
58	\$1,864.03	\$1,558.02	\$1,214.11	\$1,072.62
59	\$1,904.27	\$1,591.65	\$1,240.32	\$1,095.78
60	\$1,985.48	\$1,659.53	\$1,293.21	\$1,142.51
61	\$2,055.71	\$1,718.23	\$1,338.96	\$1,182.92
62	\$2,101.79	\$1,756.75	\$1,368.97	\$1,209.44
63	\$2,159.59	\$1,805.06	\$1,406.62	\$1,242.70
64+	\$2,194.69	\$1,834.40	\$1,429.48	\$1,262.89

Santa Cruz County

Plan Name	(2024) Platinum MI01 HMO	(2024) Gold MI02 HMO	(2024) Silver MI03 HMO	(2024) Bronze MI04 HMO
Plan Number	MI01	MI02	MI03	MI04
Age	Platinum	Gold	Silver	Bronze
0-14	\$589.37	\$492.61	\$383.88	\$339.14
15	\$641.76	\$536.40	\$418.00	\$369.29
16	\$661.79	\$553.14	\$431.05	\$380.81
17	\$681.82	\$569.89	\$444.09	\$392.34
18	\$703.39	\$587.92	\$458.14	\$404.75
19	\$724.96	\$605.95	\$472.19	\$417.17
20	\$747.30	\$624.62	\$486.75	\$430.02
21	\$770.42	\$643.95	\$501.81	\$443.33
22	\$770.42	\$643.95	\$501.81	\$443.33
23	\$770.42	\$643.95	\$501.81	\$443.33
24	\$770.42	\$643.95	\$501.81	\$443.33
25	\$773.50	\$646.51	\$503.81	\$445.09
26	\$788.90	\$659.39	\$513.84	\$453.96
27	\$807.39	\$674.85	\$525.89	\$464.60
28	\$837.44	\$699.96	\$545.46	\$481.89
29	\$862.09	\$720.57	\$561.51	\$496.08
30	\$874.42	\$730.87	\$569.54	\$503.17
31	\$892.91	\$746.33	\$581.59	\$513.81
32	\$911.40	\$761.78	\$593.63	\$524.45
33	\$922.96	\$771.44	\$601.16	\$531.10
34	\$935.28	\$781.74	\$609.18	\$538.19
35	\$941.45	\$786.89	\$613.20	\$541.74
36	\$947.61	\$792.05	\$617.21	\$545.29
37	\$953.77	\$797.20	\$621.23	\$548.83
38	\$959.94	\$802.35	\$625.24	\$552.38
39	\$972.26	\$812.65	\$633.27	\$559.47
40	\$984.59	\$822.95	\$641.30	\$566.56
41	\$1,003.08	\$838.41	\$653.34	\$577.20
42	\$1,020.80	\$853.22	\$664.88	\$587.40
43	\$1,045.45	\$873.83	\$680.94	\$601.59
44	\$1,076.27	\$899.58	\$701.01	\$619.32
45	\$1,112.48	\$929.85	\$724.60	\$640.16
46	\$1,155.62	\$965.91	\$752.70	\$664.98
47	\$1,204.16	\$1,006.48	\$784.31	\$692.91
48	\$1,259.63	\$1,052.84	\$820.44	\$724.83
49	\$1,314.33	\$1,098.56	\$856.07	\$756.31
50	\$1,375.96	\$1,150.08	\$896.21	\$791.77
51	\$1,436.82	\$1,200.95	\$935.86	\$826.79
52	\$1,503.85	\$1,256.97	\$979.51	\$865.36
53	\$1,571.65	\$1,313.64	\$1,023.67	\$904.38
54	\$1,644.84	\$1,374.81	\$1,071.34	\$946.49
55	\$1,718.03	\$1,435.98	\$1,119.01	\$988.61
56	\$1,797.38	\$1,502.31	\$1,170.70	\$1,034.27
57	\$1,877.50	\$1,569.28	\$1,222.88	\$1,080.37
58	\$1,963.02	\$1,640.76	\$1,278.58	\$1,129.58
59	\$2,005.39	\$1,676.17	\$1,306.18	\$1,153.96
60	\$2,090.91	\$1,747.65	\$1,361.88	\$1,203.17
61	\$2,164.87	\$1,809.47	\$1,410.06	\$1,245.73
62	\$2,213.40	\$1,850.04	\$1,441.67	\$1,273.66
63	\$2,274.26	\$1,900.91	\$1,481.31	\$1,308.68
64+	\$2,311.23	\$1,931.81	\$1,505.39	\$1,329.95

San Joaquin and Stanislaus Counties

Plan Name	(2024) Platinum MI01 HMO	(2024) Gold MI02 HMO	(2024) Silver MI03 HMO	(2024) Bronze MI04 HMO
Plan Number	MI01	MI02	MI03	MI04
Age	Platinum	Gold	Silver	Bronze
0-14	\$501.24	\$418.95	\$326.48	\$288.43
15	\$545.80	\$456.19	\$355.50	\$314.07
16	\$562.83	\$470.43	\$366.59	\$323.87
17	\$579.87	\$484.67	\$377.69	\$333.67
18	\$598.21	\$500.01	\$389.64	\$344.23
19	\$616.56	\$515.34	\$401.59	\$354.79
20	\$635.56	\$531.22	\$413.96	\$365.72
21	\$655.23	\$547.66	\$426.78	\$377.04
22	\$655.23	\$547.66	\$426.78	\$377.04
23	\$655.23	\$547.66	\$426.78	\$377.04
24	\$655.23	\$547.66	\$426.78	\$377.04
25	\$657.84	\$549.84	\$428.47	\$378.54
26	\$670.94	\$560.80	\$437.01	\$386.08
27	\$686.67	\$573.94	\$447.25	\$395.13
28	\$712.22	\$595.30	\$463.89	\$409.83
29	\$733.19	\$612.82	\$477.55	\$421.90
30	\$743.67	\$621.59	\$484.38	\$427.93
31	\$759.40	\$634.73	\$494.62	\$436.98
32	\$775.12	\$647.87	\$504.86	\$446.03
33	\$784.95	\$656.09	\$511.27	\$451.68
34	\$795.43	\$664.85	\$518.09	\$457.72
35	\$800.67	\$669.23	\$521.51	\$460.73
36	\$805.92	\$673.61	\$524.92	\$463.75
37	\$811.16	\$677.99	\$528.34	\$466.77
38	\$816.40	\$682.37	\$531.75	\$469.78
39	\$826.88	\$691.14	\$538.58	\$475.81
40	\$837.37	\$699.90	\$545.41	\$481.85
41	\$853.09	\$713.04	\$555.65	\$490.90
42	\$868.16	\$725.64	\$565.47	\$499.57
43	\$889.13	\$743.16	\$579.12	\$511.63
44	\$915.34	\$765.07	\$596.19	\$526.71
45	\$946.13	\$790.81	\$616.25	\$544.43
46	\$982.82	\$821.48	\$640.15	\$565.55
47	\$1,024.10	\$855.98	\$667.04	\$589.30
48	\$1,071.28	\$895.41	\$697.76	\$616.45
49	\$1,117.80	\$934.30	\$728.06	\$643.22
50	\$1,170.22	\$978.11	\$762.20	\$673.38
51	\$1,221.98	\$1,021.37	\$795.92	\$703.17
52	\$1,278.98	\$1,069.02	\$833.05	\$735.97
53	\$1,336.64	\$1,117.21	\$870.60	\$769.15
54	\$1,398.89	\$1,169.24	\$911.15	\$804.96
55	\$1,461.13	\$1,221.26	\$951.69	\$840.78
56	\$1,528.62	\$1,277.67	\$995.65	\$879.62
57	\$1,596.76	\$1,334.63	\$1,040.03	\$918.83
58	\$1,669.49	\$1,395.42	\$1,087.40	\$960.68
59	\$1,705.53	\$1,425.54	\$1,110.87	\$981.42
60	\$1,778.26	\$1,486.33	\$1,158.24	\$1,023.27
61	\$1,841.16	\$1,538.90	\$1,199.21	\$1,059.46
62	\$1,882.44	\$1,573.41	\$1,226.10	\$1,083.21
63	\$1,934.20	\$1,616.67	\$1,259.81	\$1,113.00
64+	\$1,965.64	\$1,642.95	\$1,280.29	\$1,131.09